

Every installation is unique. Before starting, please check to ensure that the procedures recommended will not damage the door upon which this product is to be used. Digital Systems, Inc. is not responsible for damage caused by installation.

PARTS LIST:

- | | |
|------------------------|----------------------------|
| 1. Outside Body | 1 each |
| 2. Escutcheon, rubber | 1 each |
| 3. Spacer for body | 1 each |
| 4. X Spindle, 85mm | 1 each |
| 5. Spindle, 85mm | 1 each |
| 6. Screw, M4 x 30mm | 2 each (1 3/8" - 1 3/4") |
| 7. Screw, M4 x 30mm | 2 each (1 13/16" - 2 1/4") |
| 8. Wafer, blue | 2 each |
| 9. Wafer, red (active) | 2 each |
| 10. Washer, flat | 2 each |
| 11. Washer, finishing | 1 each |
| 12. Tweezer | 1 each |

OPTIONAL ACCESSORIES:

M5 x M5 mounting posts
and screws

Spanner head stainless steel
tamper resistant machine
screws

Over Sized Knob

HANDING:

This panic exit device is ready for clockwise or counterclockwise operation. It must, however, be calibrated for use with the specific panic exit device.

SPINDLE:

First, insert the X Spindle into the "+" cam or the regular spindle into either the "-" or "I" type cam of the panic exit device. Turn the SPINDLE and observe the cam. If the cam has "freeplay" before engaging the latch (e.g.: Von Duprin 99), proceed to the installation. If the cam is "rigid" and the latch begins to retract immediately (e.g.: Von Duprin 88, JPM 90 series (bi directional); Monarch 19R (mono-directional), the SPINDLE GEAR MECHANISM **must be adjusted** for proper alignment.

The SPINDLE GEAR MECHANISM can be seen on the back operation portion of the lock, located above the lower mounting post. The two "points" are at 3 and 9 o'clock. Adjust the SPINDLE GEAR MECHANISM as follows.

1. Press the "C" (clear) button which will seat the wafers.
2. Place the lock on a flat surface with the back of the lock facing up. It is advisable to place a soft cloth underneath the lock to avoid scratching the finish.
3. Remove the upper and lower HEXAGON MOUNTING POSTS.
4. Remove the three SILVER screws with a #1 Phillips screwdriver (one at the top left and two on either side of the bottom).
5. **CAREFULLY** pry the lower portion of the locking mechanism out of the housing 1/2" or just enough to be able to rotate the outside knob without disturbing the push button springs, etc.
6. Rotate the SPINDLE GEAR MECHANISM by using the outside knob so that the two "points" are at 2 and 8 o'clock for right hand installation or at 4 and 10 o'clock for left hand installation.

7. Replace the locking mechanism into the housing. Check to assure the "points" of the SPINDLE GEAR MECHANISM are at the desired position.
8. Replace the three SILVER screws and the two MOUNTING POSTS. **Take care not to over-tighten the mounting posts.**

INSTALLATION:

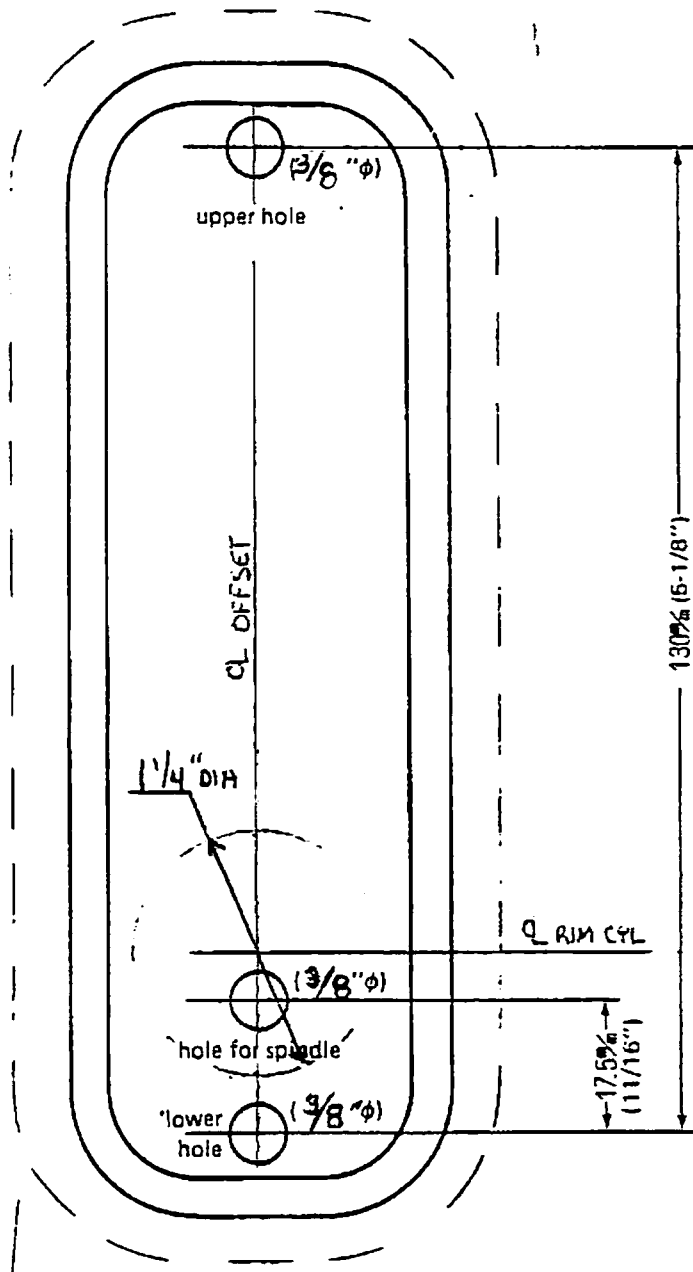
1. If you are planning to change the combination, do it at this time following the "How to Change The Secret Number" instruction sheet and **verify proper operation BEFORE INSTALLATION.**
2. Select the panic exit device template which includes the position of a standard rim cylinder. **Lay over the template of the 210P** onto the panic exit device using the center of the 1 1/4" rim cylinder as orientation. Mark the exit device accordingly.
3. Drill the mounting holes for the 210P using one of the following:
 - a. **NEW INSTALLATION:** Drill either three 3/8" holes OR two 3/8" holes at the top and bottom AND a 1 1/4" hole in the lower center (whichever is most convenient).
 - b. **RETROFIT INSTALLATION:** If the current hole is 2" or less, proceed to paragraph 4. If the existing hole is 2" to 2 1/8", you will need the larger Escutcheon to cover the existing hole.
4. Place the rubber Escutcheon on the back of the lock body and mount the 210P to the door using the supplied finishing washer and screw in the top hole and the supplied flat washer and screw in the bottom hole. The BODY SPACER may be used in place of the RUBBER ESCUTCHEON if required.
NOTE: When mounting the 210P partially over a Pull or Push Plate, use the supplied BODY SPACER in back of the Escutcheon. Cut and shim as required.
5. The spindle is for 1 3/4" thick doors. It may be necessary to shorten the Spindle length, depending on manufacturer and model. Cut the "+" end of the X Spindle. Be sure to remove any burrs left on the spindle.
6. Insert the "I" end of the X Spindle into the DIGITAL vertically and the "+" end into the panic exit device.
7. Install the panic exit device as per the manufacturer's instructions.

NOTE: If the panic exit "+" cam is "open" so the the Spindle can slide through (ie: Monarch), place a burr on the "+" side of the Spindle approximately 3/8" from the end. This will assure the Spindle will not interfere with the latch operation.

DIGITAL DOOR LOCK

TEMPLATE

No. 210 P



Metal Escutcheon
Cutline